

# PARA USO EN AVIACIÓN VIRTUAL ÚNICAMENTE

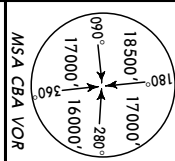
**SLCB/CBB**  
**JORGE WILSTERMAN**

**JEPPESEN COCHABAMBA, BOLIVIA**  
**ARRIVAL**

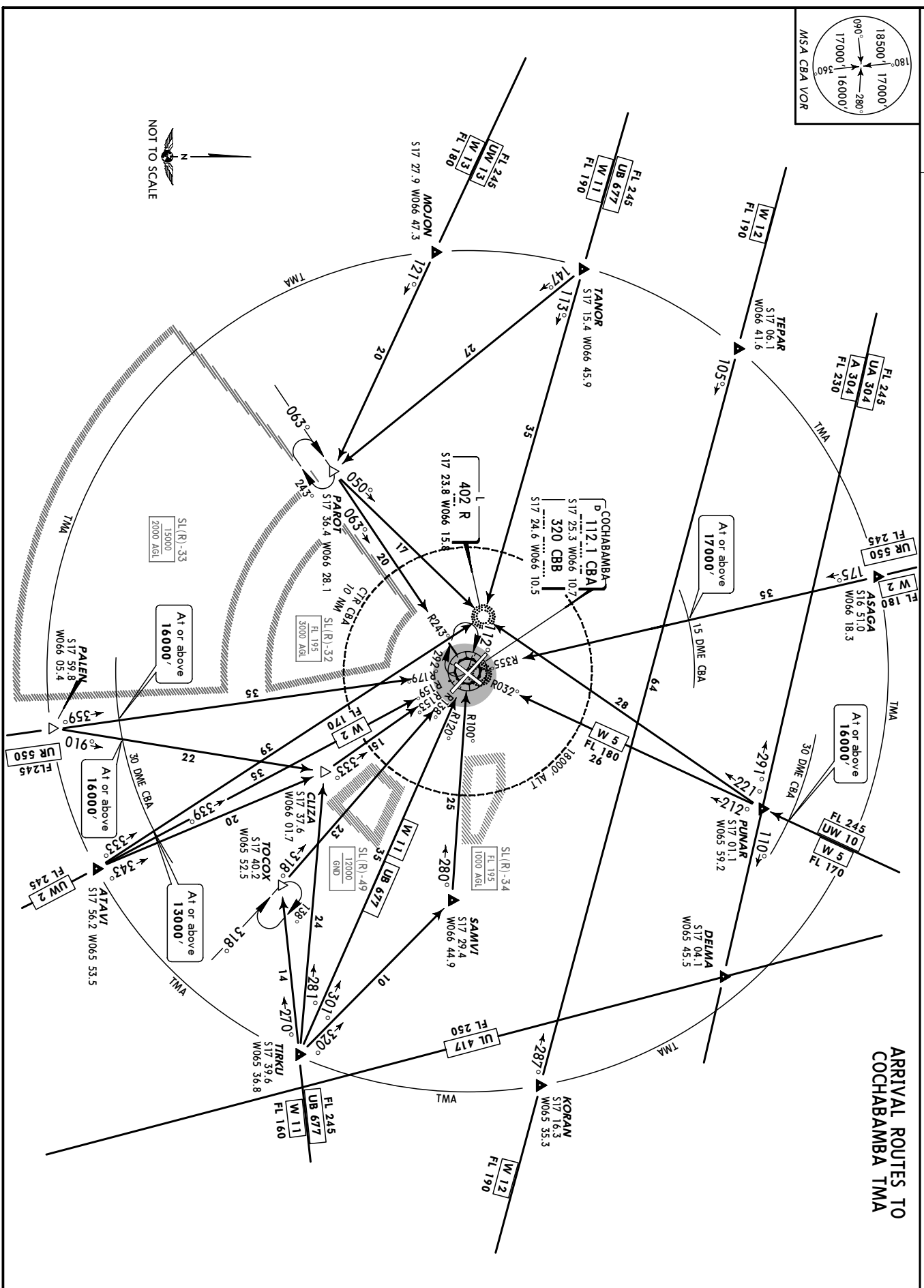
10-2 3 DEC 04

Apf Elev  
8360'

Alt Set: hPa Trans level: By ATC Trans alt: 18000'



**ARRIVAL ROUTES TO  
COCHABAMBA TMA**



CHANGES: Procedure revised.

© JEPPESEN SANDERSON, INC., 2003, 2004. ALL RIGHTS RESERVED.

# PARA USO EN AVIACIÓN VIRTUAL ÚNICAMENTE

SLCB/CBB

JORGE WILSTERMAN

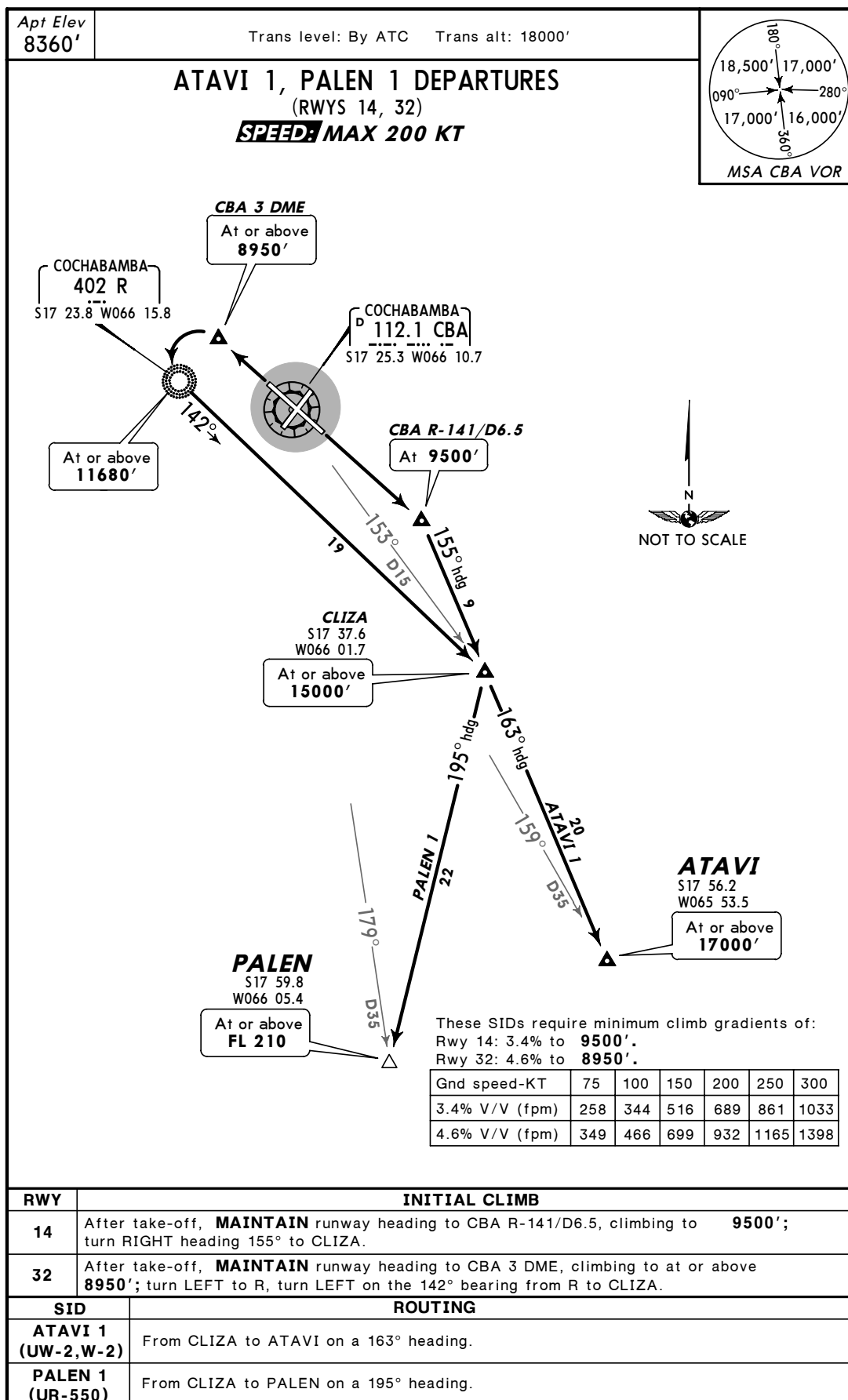
JEPPESEN

12 AUG 05

10-3

COCHABAMBA, BOLIVIA

SID



CHANGES: Rwy 14 climb gradient.

© JEPPESEN SANDERSON, INC., 2002, 2005. ALL RIGHTS RESERVED.

# PARA USO EN AVIACIÓN VIRTUAL ÚNICAMENTE

SLCB/CBB

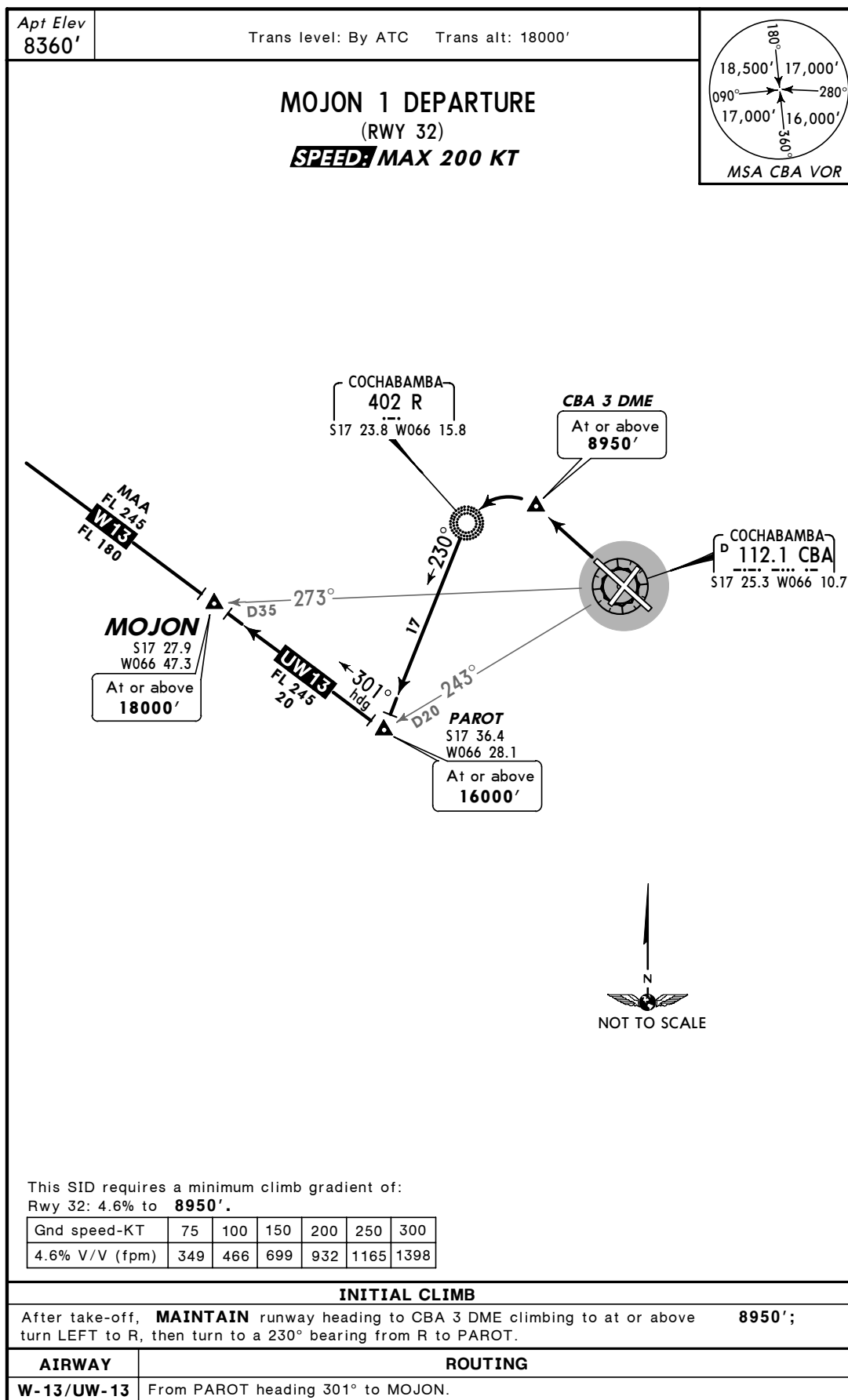
JORGE WILSTERMAN

JEPPesen

12 AUG 05 (10-3A)

COCHABAMBA, BOLIVIA

**SID**



CHANGES: None.

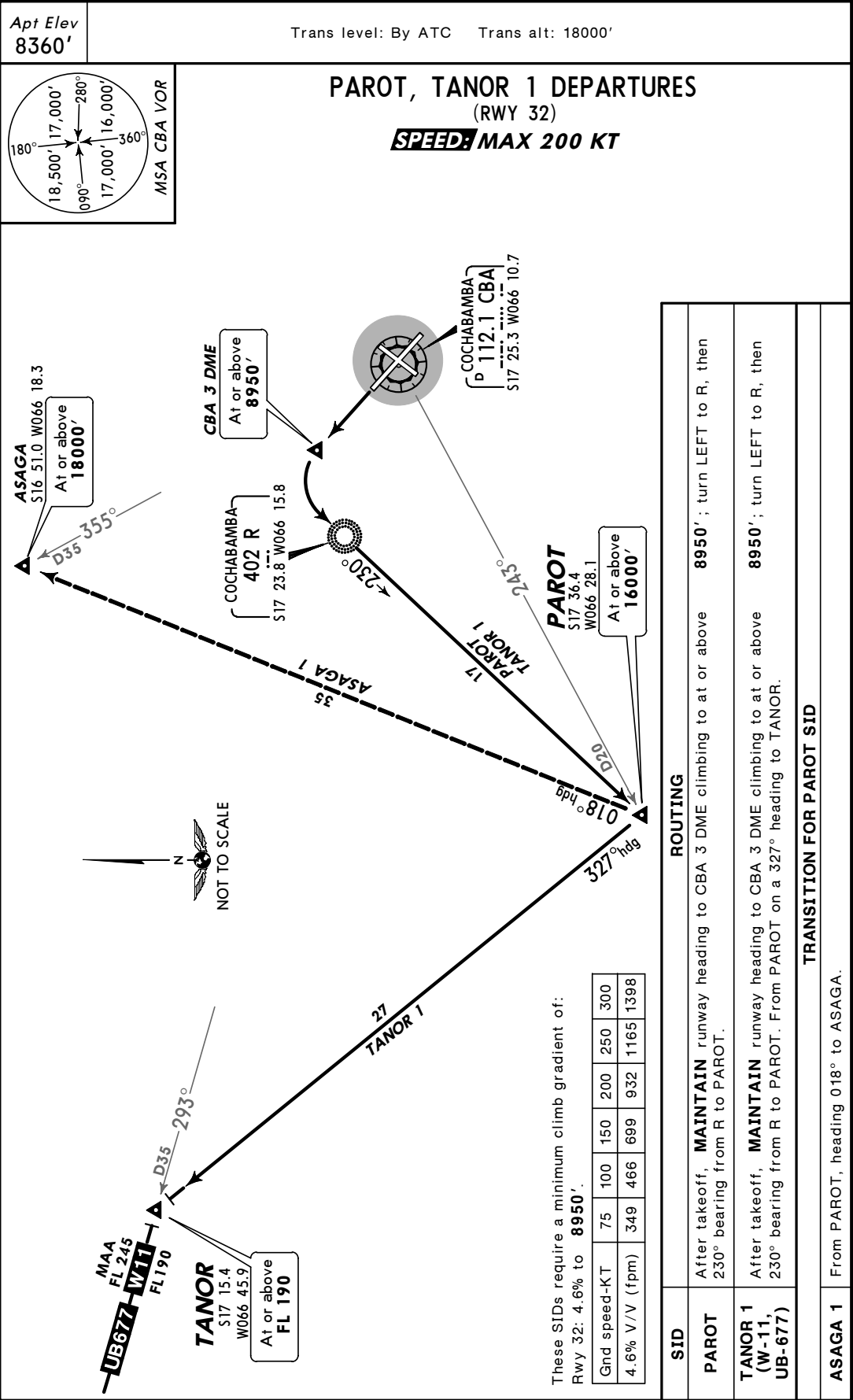
© JEPPESEN SANDERSON, INC., 2004, 2005. ALL RIGHTS RESERVED.

PARA USO EN AVIACIÓN VIRTUAL ÚNICAMENTE

SLCB/CBB  
JORGE WILSTERMAN

JEPPesen  
12 AUG 05 10-3B

COCHABAMBA, BOLIVIA  
SID



CHANGES: None.

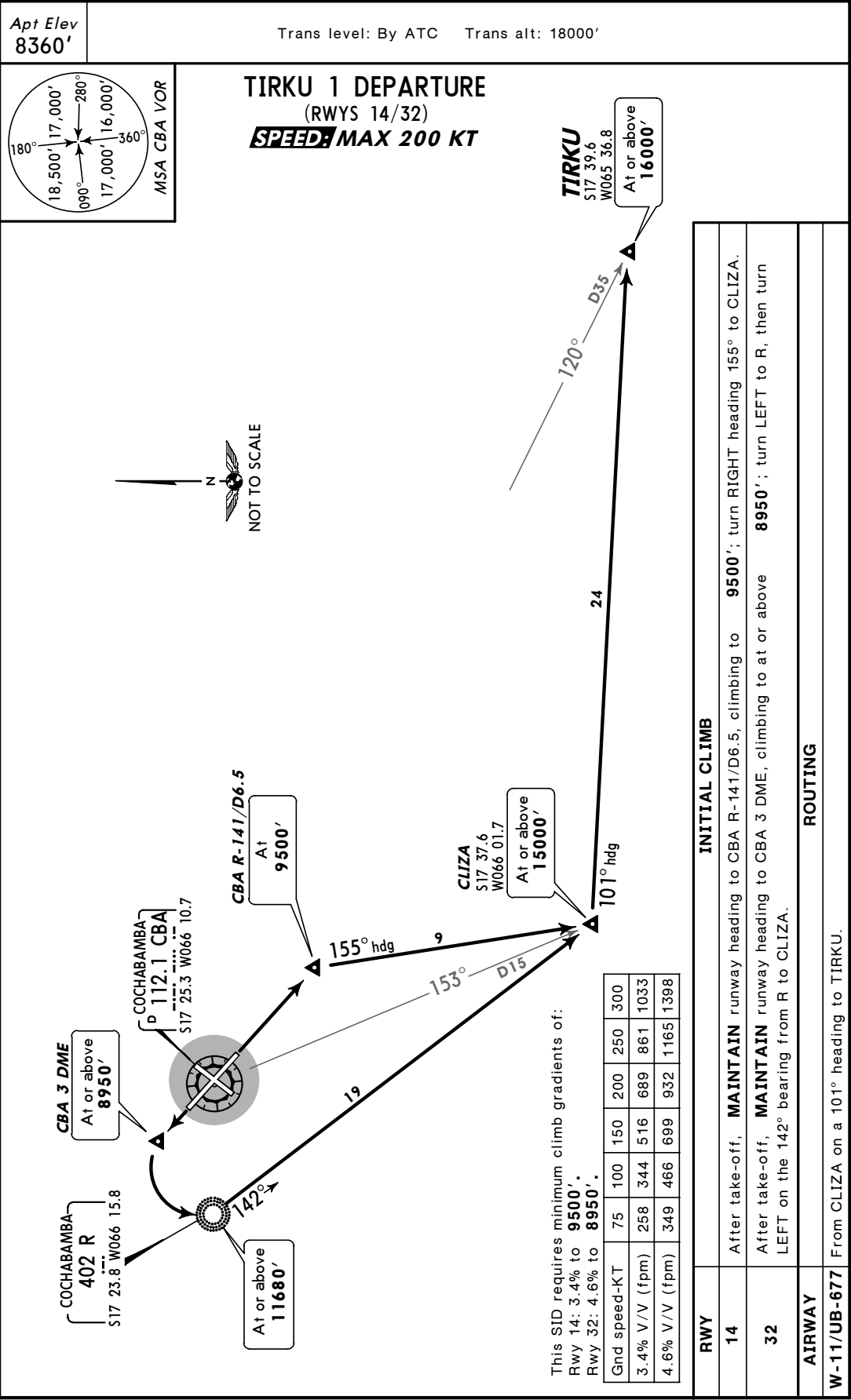
© JEPPESEN SANDERSON, INC., 2004, 2005. ALL RIGHTS RESERVED.

PARA USO EN AVIACIÓN VIRTUAL ÚNICAMENTE

SLCB/CBB  
JORGE WILSTERMAN

JEPPESEN  
12 AUG 05 10-3C

COCHABAMBA, BOLIVIA  
SID



CHANGES: Rwy 14 climb gradient.

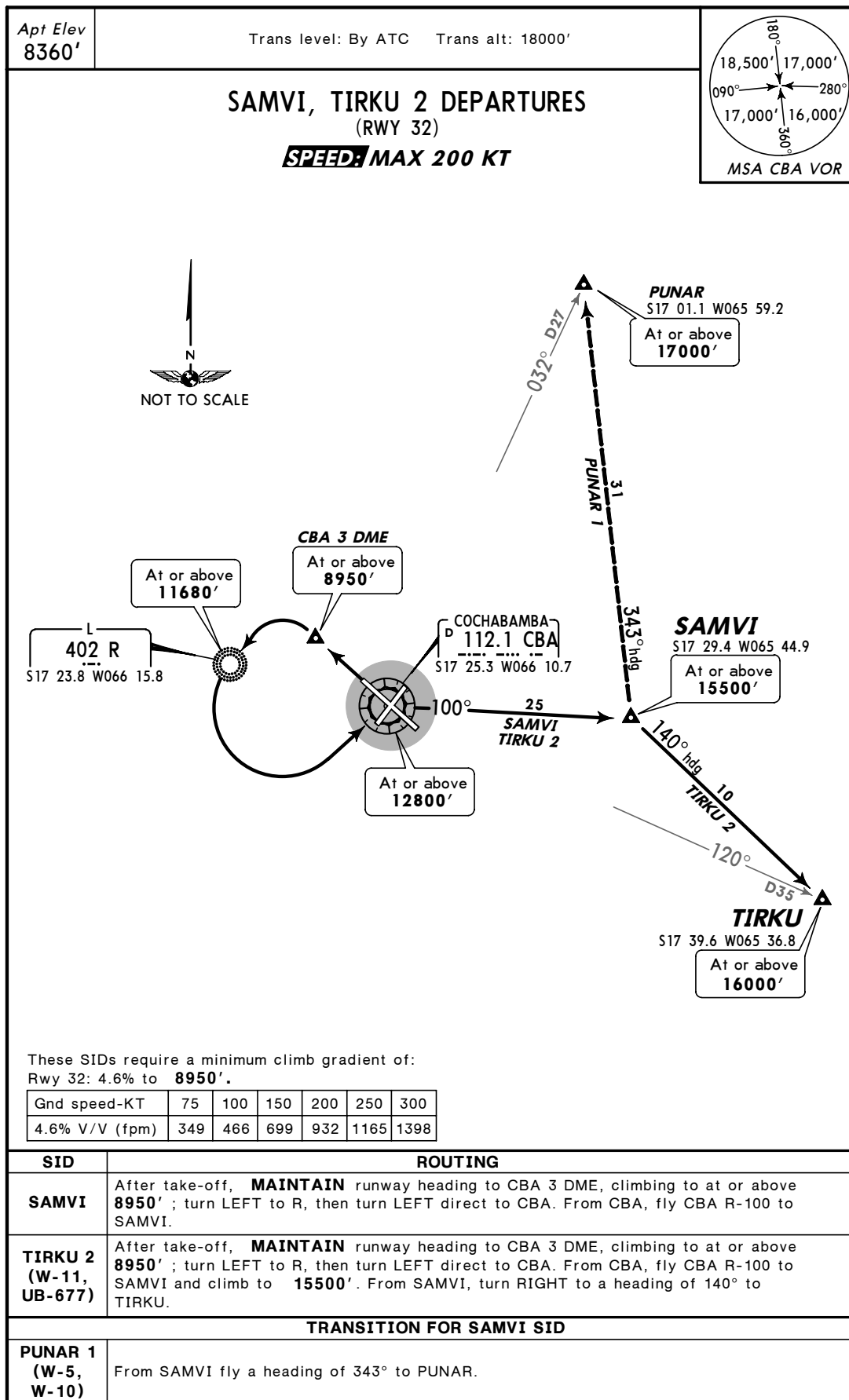
© JEPPESEN SANDERSON, INC., 2004, 2005. ALL RIGHTS RESERVED.

# PARA USO EN AVIACIÓN VIRTUAL ÚNICAMENTE

SLCB/CBB  
JORGE WILSTERMAN

JEPPESEN  
3 DEC 04 (10-3D)

COCHABAMBA, BOLIVIA  
**SID**



CHANGES: New procedures at this airport.

© JEPPESEN SANDERSON, INC., 2004. ALL RIGHTS RESERVED.

# PARA USO EN AVIACIÓN VIRTUAL ÚNICAMENTE

SLCB/CBB

2 DEC 05

 **JEPPesen**

10-5

COCHABAMBA, BOLIVIA  
JORGE WILSTERMAN

## LOCAL FLIGHT RESTRICTIONS

### GENERAL

Overnight of the city is strictly prohibited by the applicable Air Regulations without the express authorization of the Direccion Regional de Aeronautica Civil (ref. Reglamento Del Aire, Reglas Generales de Vuelo, Chapter IV, par 15, 1st insert).

### RUNWAY 04

- a. Night operations are not authorized.
- b. During daylight operations, aircraft should always make a left turn on departure.
- c. Piston powered aircraft are not authorized for takeoff operations

### RUNWAY 22

- a. Night takeoff are not authorized except for flight schools conducting instructional flights, in which case the aircraft should always make a right turn on departure.
- b. After takeoff, a right turn on departure should always be made during daylight operations except for single-engine aircraft with a MTOW of less than 12,566 lbs (5700kg).
- c. After takeoff, a left turn or runway heading departure is not authorized, except for single engine aircraft with a MTOW of less than 12,566 lbs (5700kg).

TAKEOFF		LANDING		
RUNWAY	DAY	NIGHT	DAY	NIGHT
04	Authorized (1)	Not Authorized	Authorized	Not Authorized
22	Authorized (2)	Not authorized except single engine aircraft.	Authorized	Authorized

#### NOTES:

- 1. Turns to the right and piston aircraft are Not Authorized.
- 2. Turns to the left are Not Authorized, except for single-engine aircraft.

# PARA USO EN AVIACIÓN VIRTUAL ÚNICAMENTE

SLCB/CBB

JEPPESEN

COCHABAMBA, BOLIVIA

JORGE WILSTERMAN INTL

5 MAY 06 (11-1)

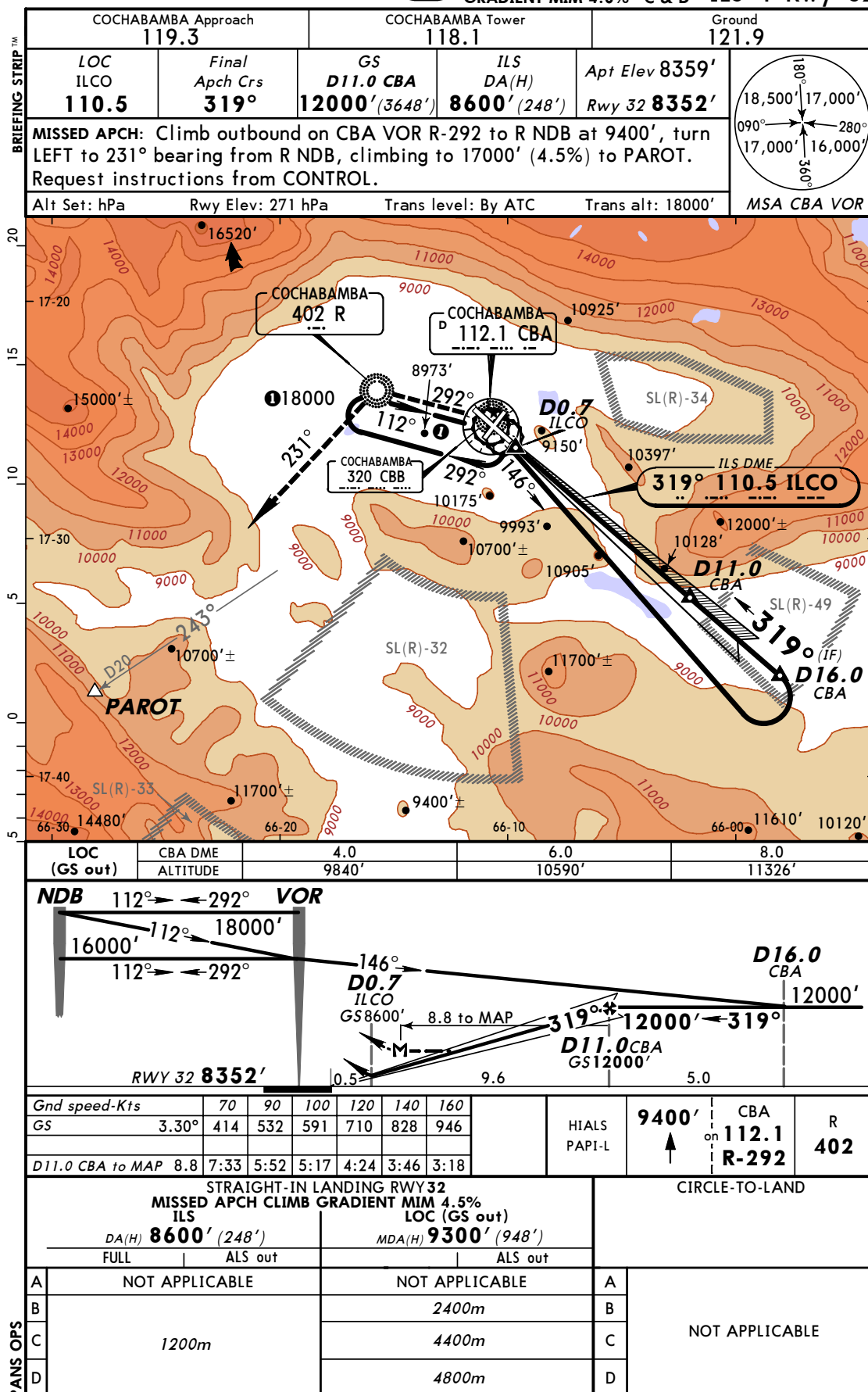
MISSED APCH CLIMB

CAT B,

GRADIENT MIM 4.5%

C & D

ILS 1 Rwy 32

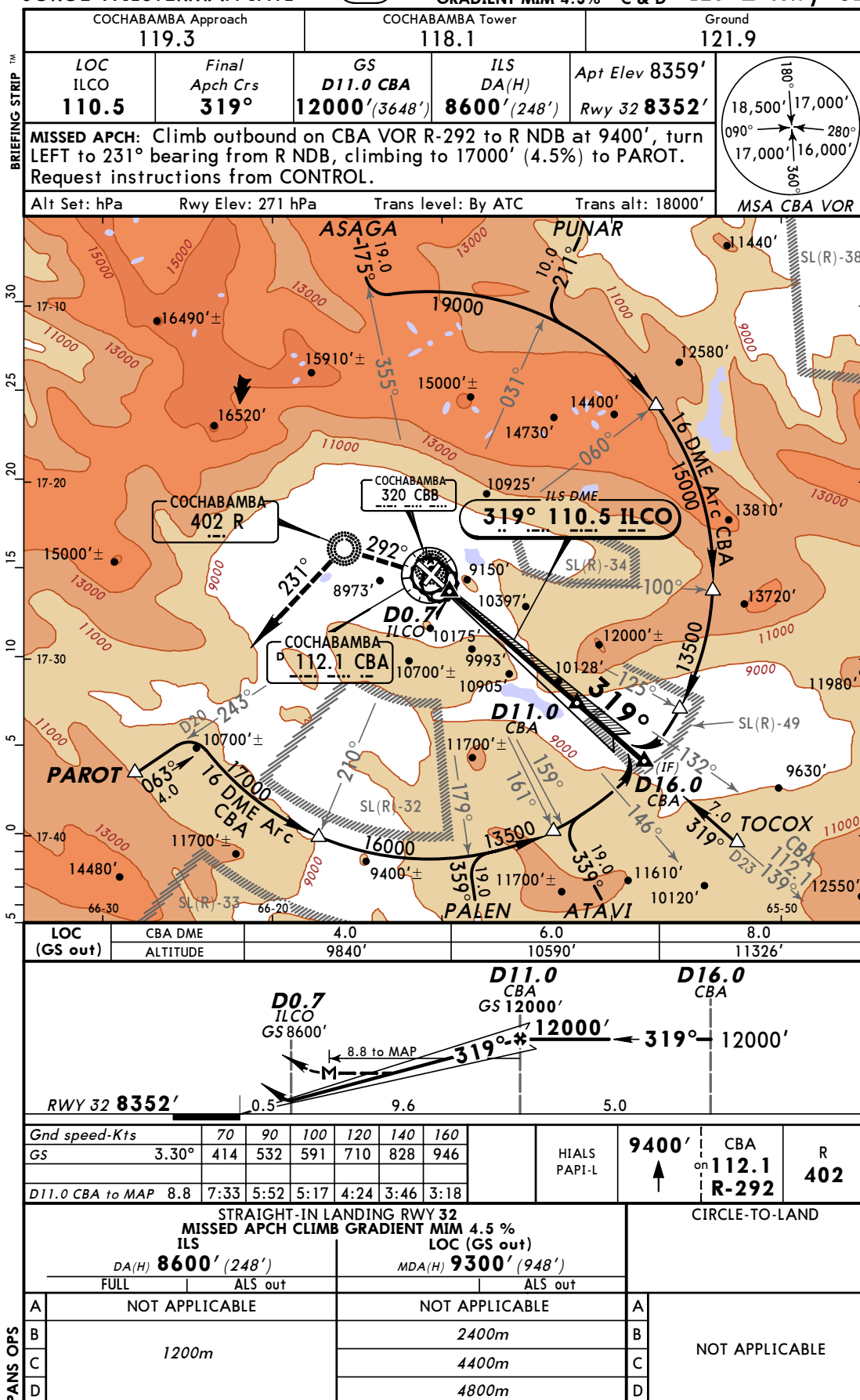


CHANGES: New procedure.

© JEPPESEN SANDERSON, INC., 2006. ALL RIGHTS RESERVED.

# PARA USO EN AVIACIÓN VIRTUAL ÚNICAMENTE

SLCB/CBB 5 MAY 06 **JEPPESSEN** COCHABAMBA, BOLIVIA  
 JORGE WILSTERMAN INTL (11-2) MISSED APCH CLIMB GRADIENT MIM 4.5% CAT B, ILS 2 Rwy 32  
 C & D



CHANGES: New procedure.

© JEPPESSEN SANDERSON, INC., 2006. ALL RIGHTS RESERVED.

# PARA USO EN AVIACIÓN VIRTUAL ÚNICAMENTE

SLCB/CBB

JEPPesen

COCHABAMBA, BOLIVIA

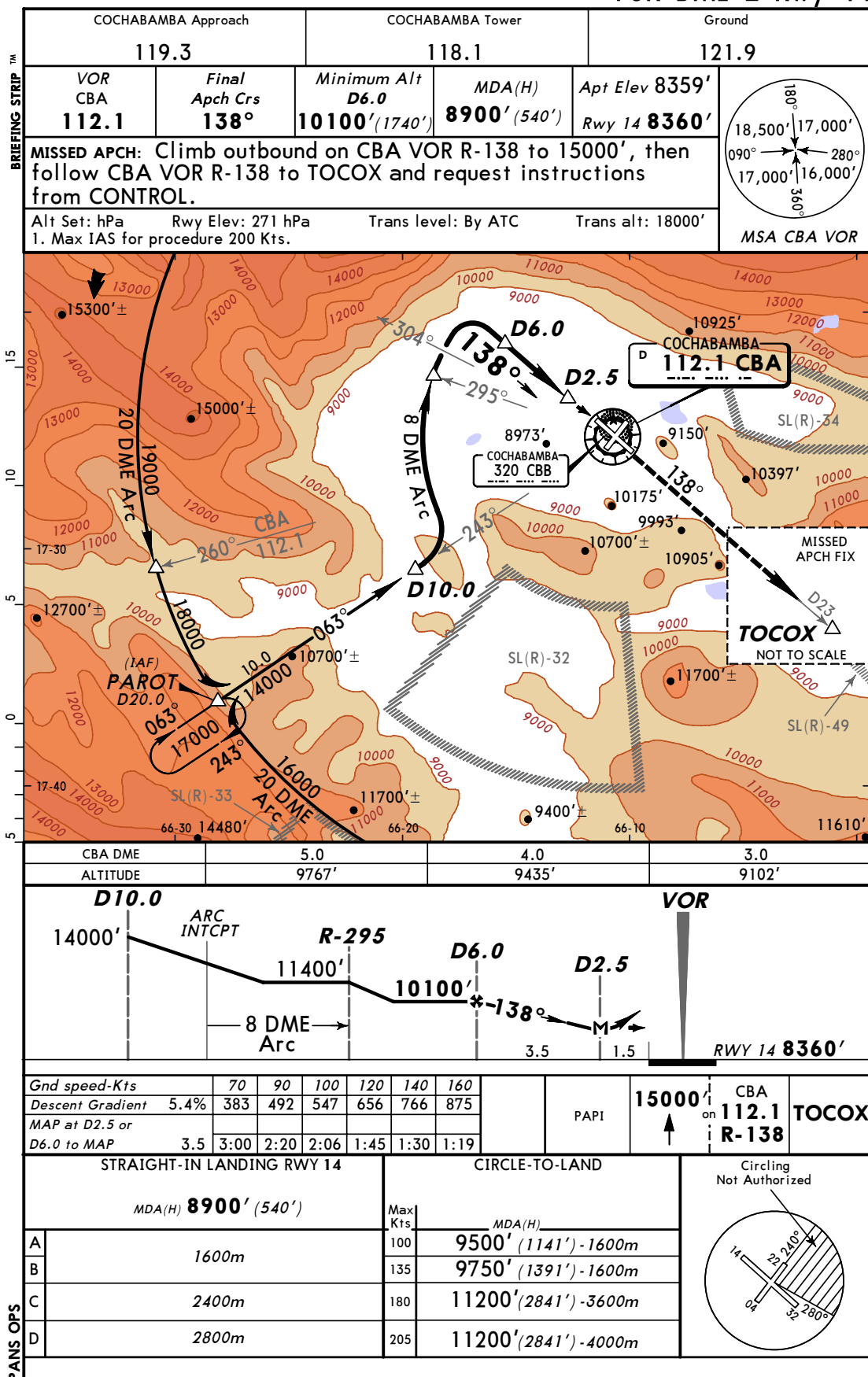
JORGE WILSTERMAN INTL

5 MAY 06

(13-1)

DESCENT ECHO

VOR DME 2 Rwy 14



CHANGES: Printing sequence.

© JEPPESEN SANDERSON, INC., 2004, 2006. ALL RIGHTS RESERVED.

# PARA USO EN AVIACIÓN VIRTUAL ÚNICAMENTE

SLCB/CBB

JORGE WILSTERMAN INTL

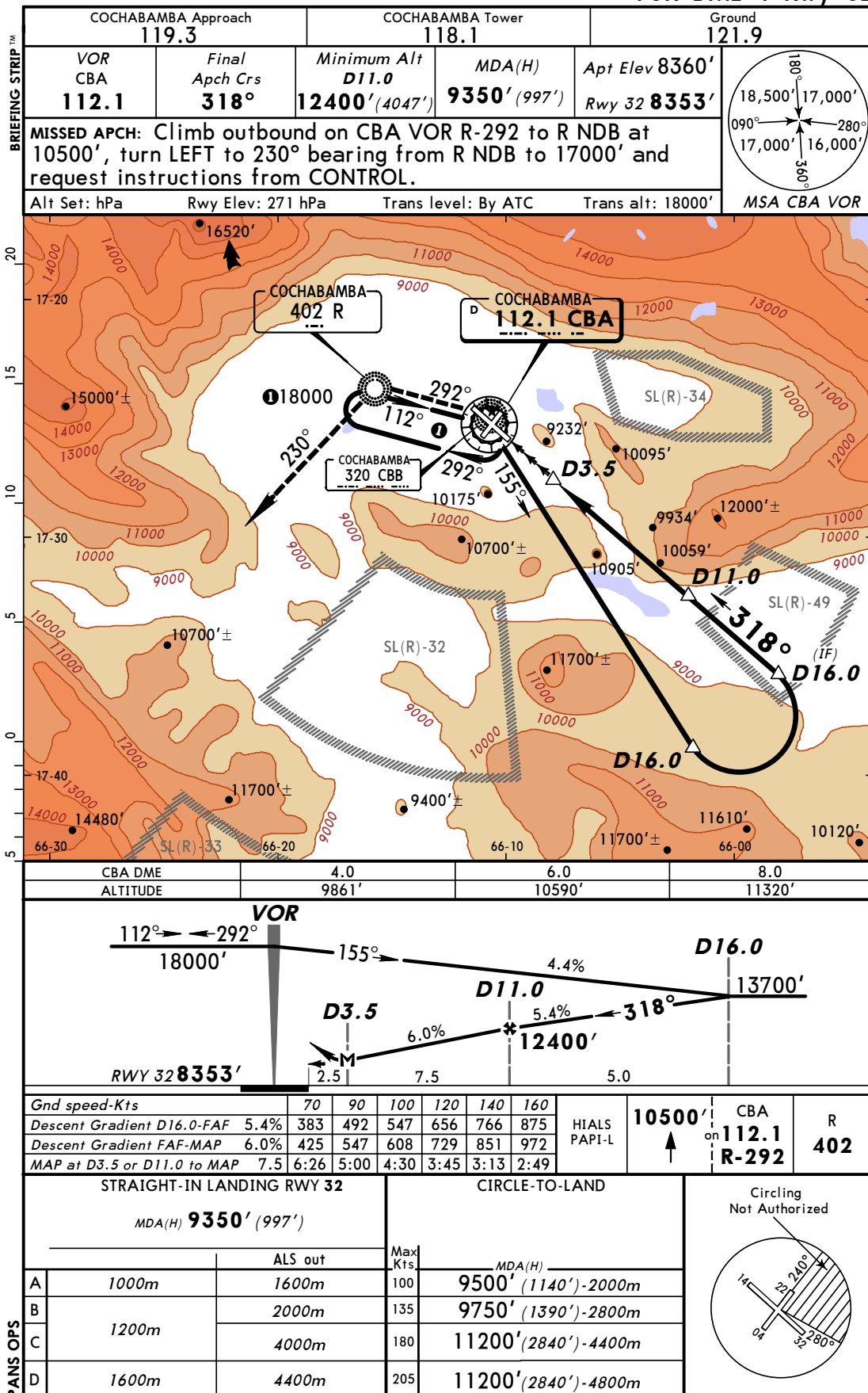
JEPPesen

2 DEC 05 (13-2)

COCHABAMBA, BOLIVIA

DESCENT FOXTROT

VOR DME 1 Rwy 32



CHANGES: PAPI changed to PAPI-L.

© JEPPESEN SANDERSON, INC., 2004, 2005. ALL RIGHTS RESERVED.

# PARA USO EN AVIACIÓN VIRTUAL ÚNICAMENTE

SLCB/CBB

JEPPesen

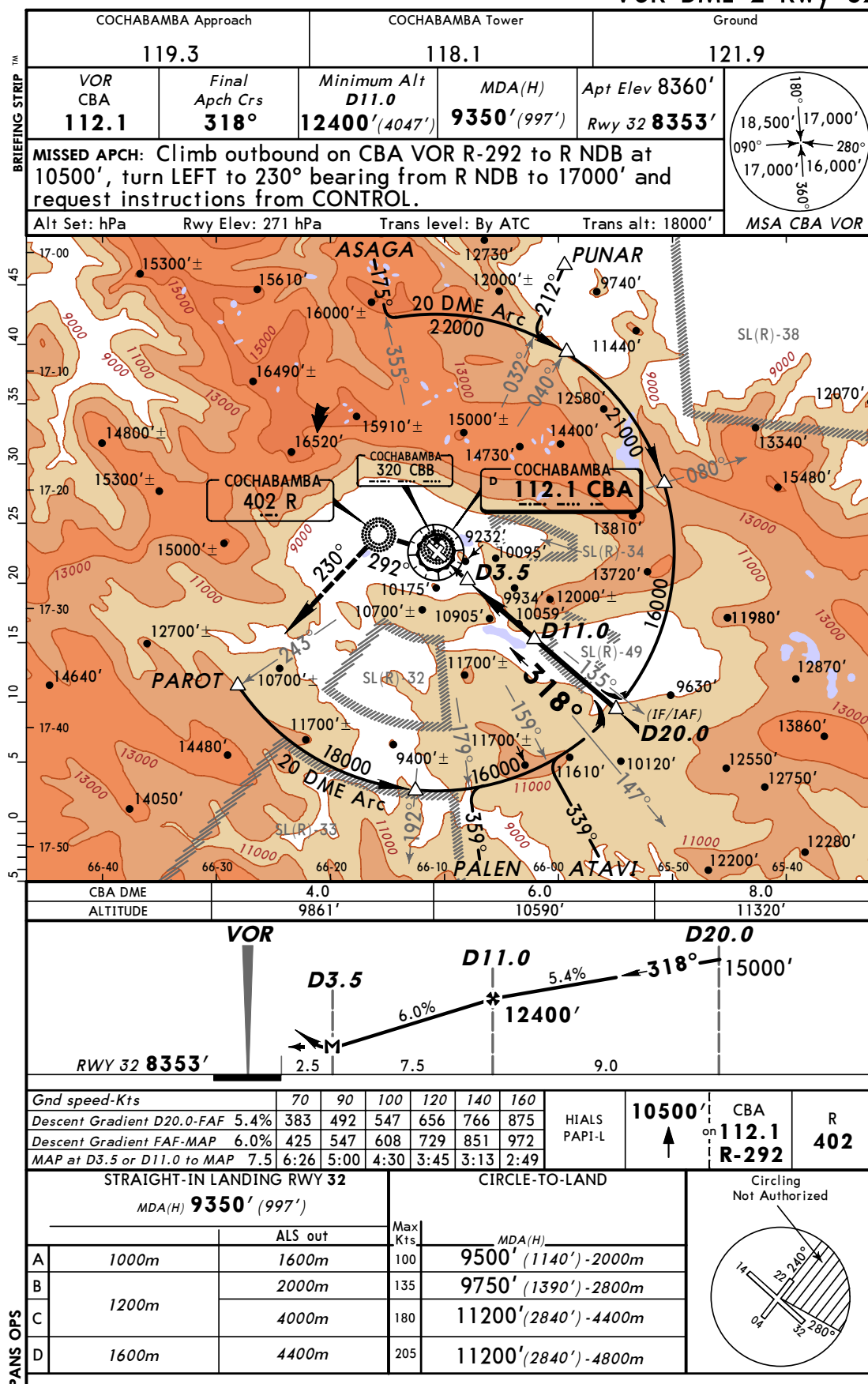
COCHABAMBA, BOLIVIA

JORGE WILSTERMAN INTL

2 DEC 05 (13-3)

DESCENT KILO

VOR DME 2 Rwy 32



CHANGES: PAPI changed to PAPI-L.

© JEPPESEN SANDERSON, INC., 2004, 2005. ALL RIGHTS RESERVED.

# PARA USO EN AVIACIÓN VIRTUAL ÚNICAMENTE

SLCB/CBB

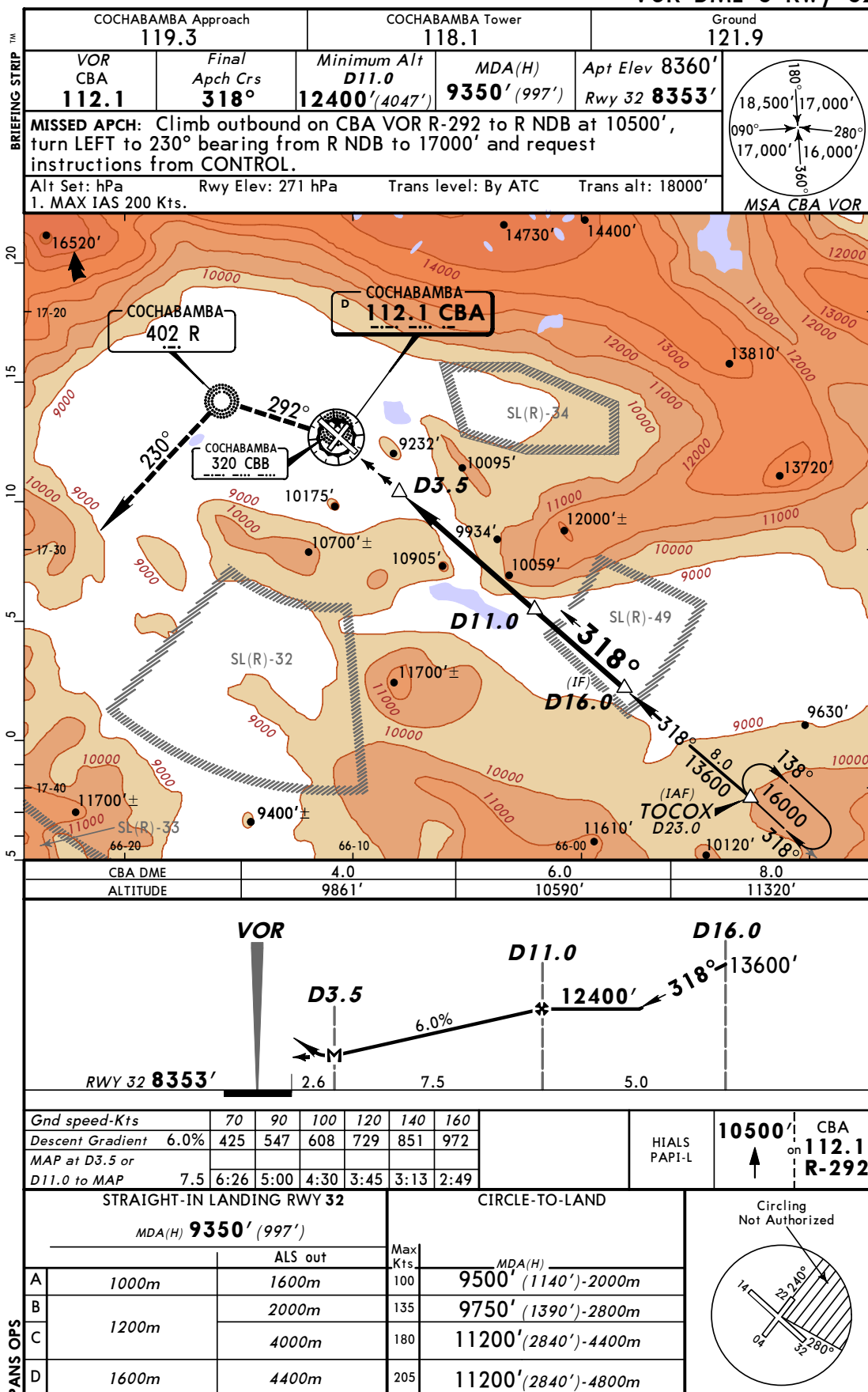
JEPPesen

COCHABAMBA, BOLIVIA

JORGE WILSTERMAN INTL

2 DEC 05 (13-4)

DESCENT LIMA  
VOR DME 3 Rwy 32



CHANGES: PAPI changed to PAPI-L.

© JEPPESEN SANDERSON, INC., 2004, 2005. ALL RIGHTS RESERVED.

# PARA USO EN AVIACIÓN VIRTUAL ÚNICAMENTE

SLCB/CBB

JEPPESSEN

COCHABAMBA, BOLIVIA

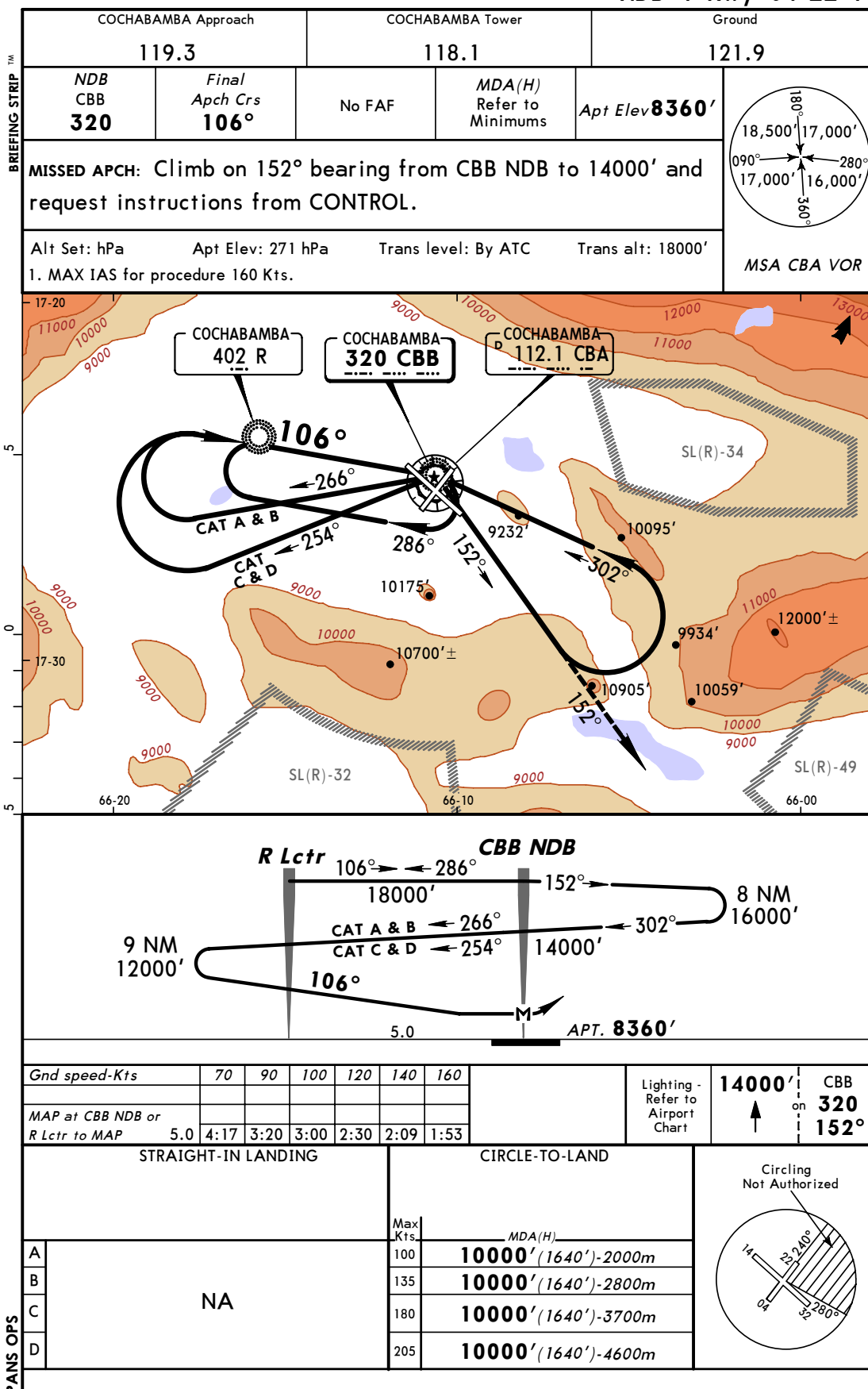
JORGE WILSTERMAN INTL

2 DEC 05

(16-1)

DESCENT MIKE

NDB 1 Rwy 04-22-14



CHANGES: None.

© JEPPESEN SANDERSON, INC., 2002, 2005. ALL RIGHTS RESERVED.

# PARA USO EN AVIACIÓN VIRTUAL ÚNICAMENTE

SLCB/CBB

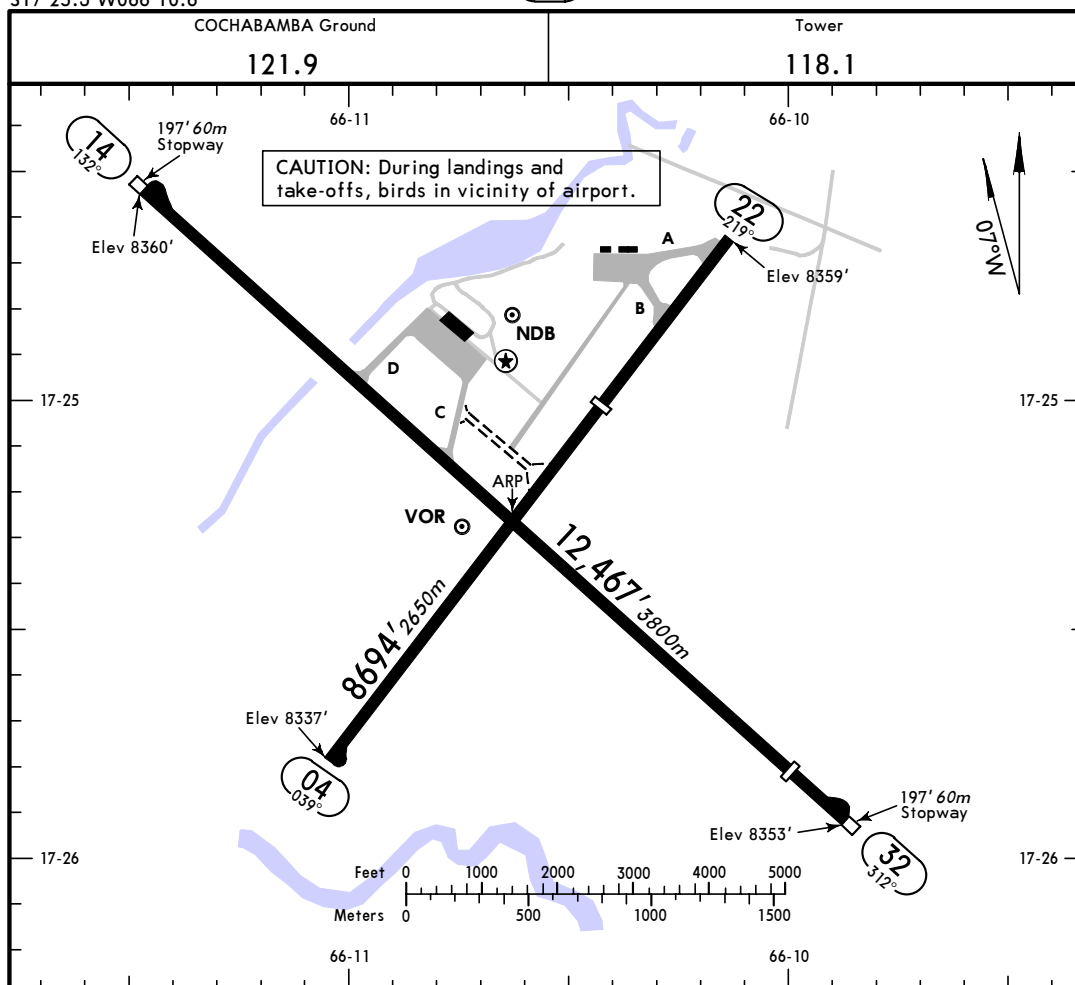
Apt Elev **8359'**  
S17 25.3 W066 10.6

**JEPPESSEN**

5 MAY 06 **(11-1)**

**COCHABAMBA, BOLIVIA**

**JORGE WILSTERMAN INTL**



## ADDITIONAL RUNWAY INFORMATION

RWY			USABLE LENGTHS		TAKE-OFF	WIDTH
			LANDING	BEYOND		
			Threshold	Glide Slope		
04	HIRL (60m)	PAPI-L (angle 3.3°)				148'
22	HIRL (60m)	REIL PAPI-L (angle 3.10°)	5906' 1800m			45m
14	HIRL (60m)	PAPI (angle 2.43°)				148'
32	HIRL (60m)	HIALS PAPI-L (angle 3.3°)	11,483' 3500m			45m

TAKE-OFF				FOR FILING AS ALTERNATE	
Rwys 04, 22					
AIR CARRIER		GENERAL AVIATION			
2 Eng	1.6 km	500m-2.4 km	A	1640m- 5.6 km	
3 & 4 Eng	0.8 km	NOT APPLICABLE	B		
			C		
			D		

CHANGES: Chart reindexed, ramp, lighting.

© JEPPESSEN SANDERSON, INC., 2001, 2006. ALL RIGHTS RESERVED.